

Diecut/outline is symbolic only. For technical specification please refer to the below mentioned DRA.

Bayer AG - Packaging Technology Berlin

RESTRICTED

Material-no: **91877311**

DRA: **0395AB-3**

Charge/Batch = LOT
 Herstellungsdatum/Manufacturing Date = MFD
 Verfallsdatum/Expiry Date = EXP

Embossing plate:

Dimension: **54.0x20.0x145.0 mm**

Color separation:

stanzform/diecutline schwarz/black PANT376C PANT272C PANT7466C

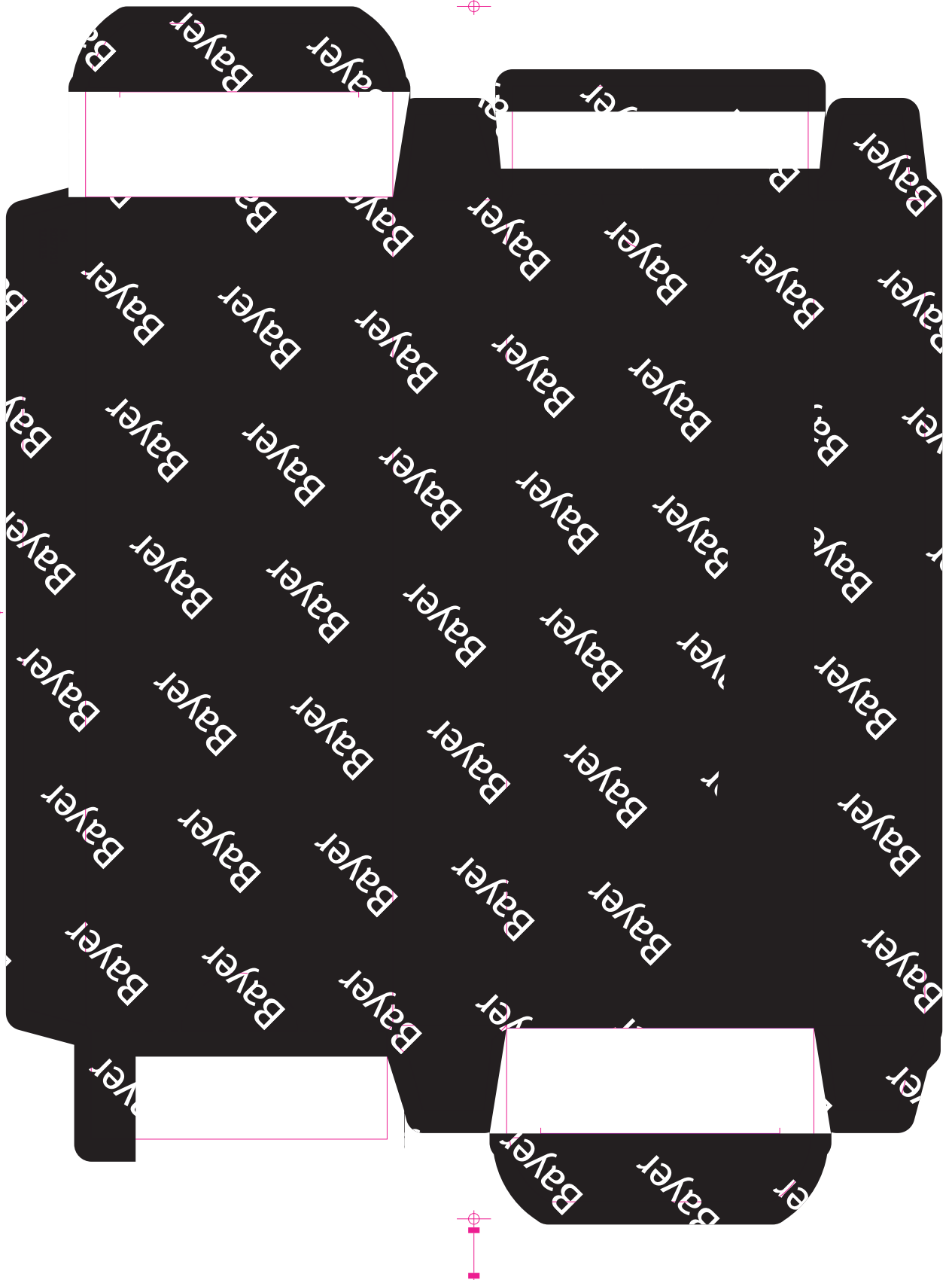
All colors:

stanzform/diecutline schwarz/black PANT376C PANT272C PANT7466C ACF_1_COLOR

Version from:

Created by: sgpfv

ACF 12.09.25 14:51:43



Diecut/outline is symbolic only. For technical specification please refer to the below mentioned DRA.

Bayer AG - Packaging Technology Berlin

RESTRICTED

Material-no: **91877311**

DRA: **0395AB-3**

Charge/Batch = LOT
 Herstellungsdatum/Manufacturing Date = MFD
 Verfalldatum/Expiry Date = EXP

Embossing plate:

Dimension: **54.0x20.0x145.0 mm**

Color separation:

stanzform/diecutline

ACF_1_COLOR

All colors:

stanzform/diecutline schwarz/black PANT376C PANT272C PANT7466C ACF_1_COLOR

Version from:

Created by: sgpfv

ACF 12.09.25 14:51:43