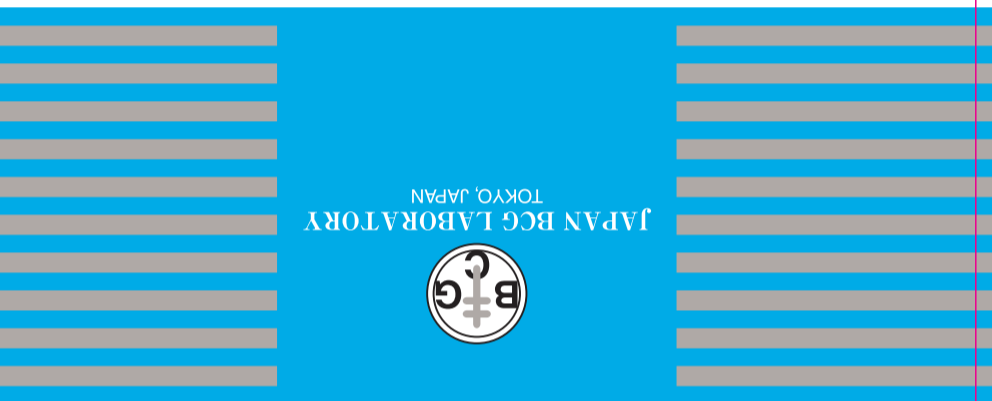
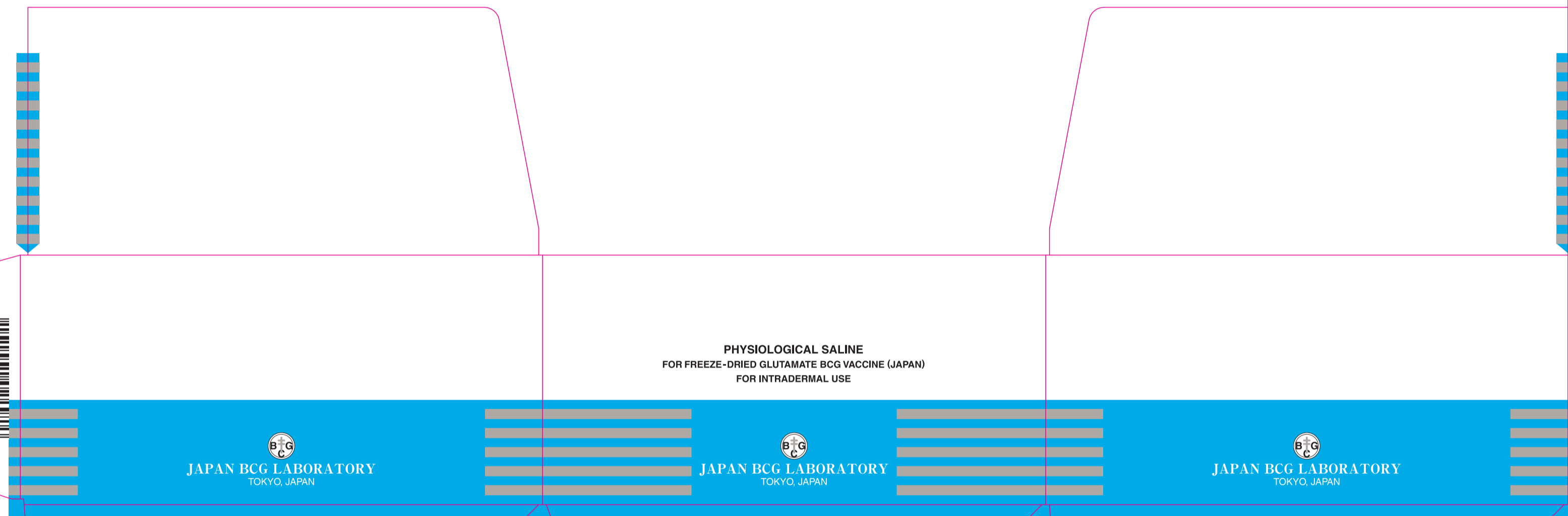


Product Registration Holder:
 Eisai (Malaysia) Sdn. Bhd. (18039-D),
 Unit 701D, Level 7, Uptown 5,
 No. 5, Jalan SS21/39, Damansara Uptown,
 47400 Petaling Jaya,
 Selangor, Malaysia.

SALINE
 PHYSIOLOGICAL SALINE
 FOR FREEZE-DRIED GLUTAMATE
 BCG VACCINE (JAPAN)
 FOR INTRADERMAL USE
 1ml PHYSIOLOGICAL SALINEx100 amps.
 Storage: +2°C~+8°C. Not to be frozen.
 MAL-198-033
 MX



SALINE PHYSIOLOGICAL SALINE
 FOR FREEZE-DRIED GLUTAMATE
 BCG VACCINE (JAPAN)
 FOR INTRADERMAL USE
 1ml PHYSIOLOGICAL SALINEx100 amps.
 Storage: +2°C~+8°C. Not to be frozen.



PHYSIOLOGICAL SALINE
 FOR FREEZE-DRIED GLUTAMATE BCG VACCINE (JAPAN)
 FOR INTRADERMAL USE

JAPAN BCG LABORATORY
 TOKYO, JAPAN

JAPAN BCG LABORATORY
 TOKYO, JAPAN

JAPAN BCG LABORATORY
 TOKYO, JAPAN

JAPAN BCG LABORATORY
 TOKYO, JAPAN

1
 特別価格 マレーシア向け (S596)

PANTONE 299 CVC

PANTONE Warm Gray 5 CVC

2019.08
 3586-03