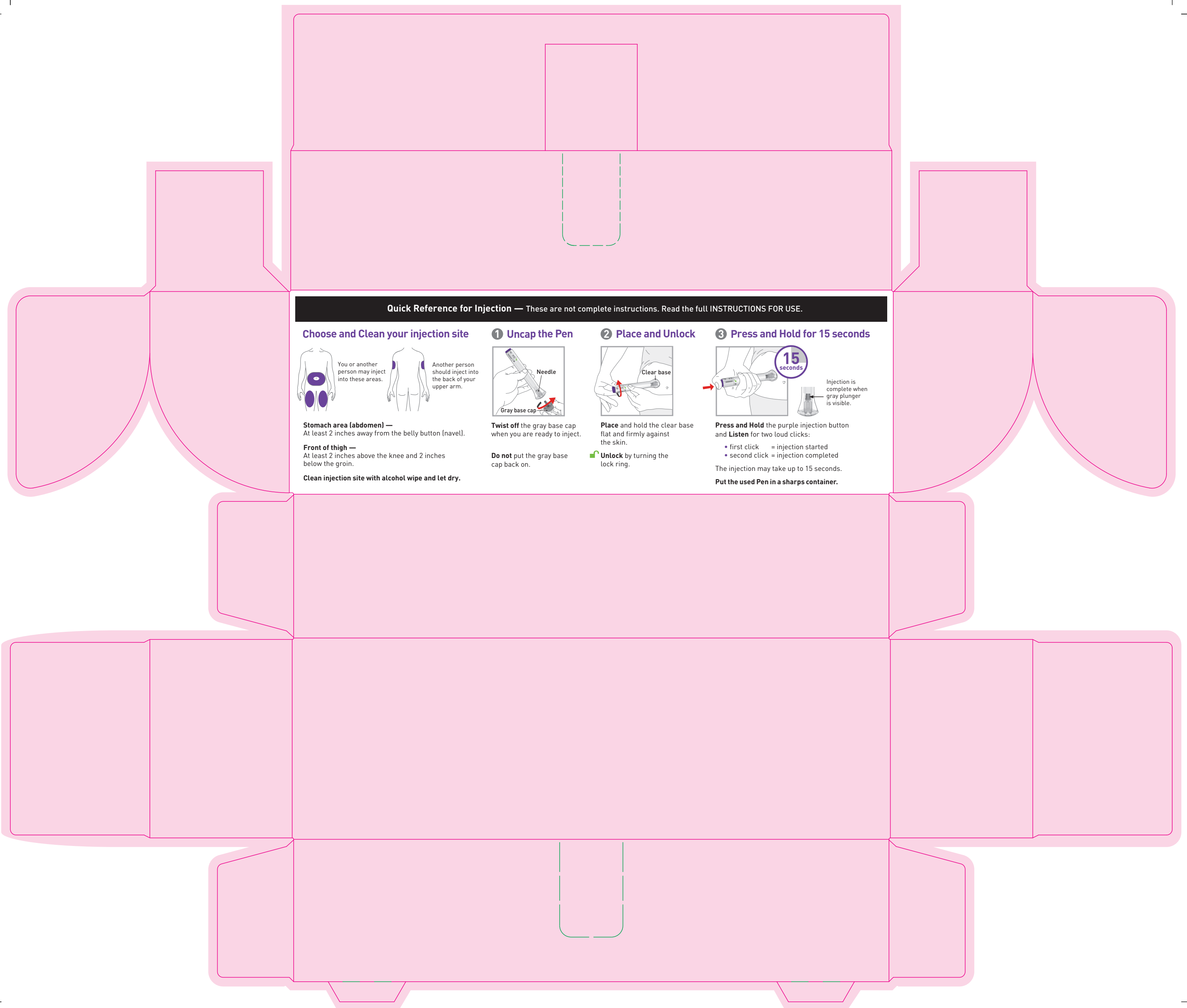


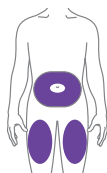
Layout Used to Develop Artwork: GLOSH009F01

PPD Information Box		ALRP Information Box	
<b>Technical Information:</b> <ul style="list-style-type: none"> <li><span style="display: inline-block; width: 10px; height: 10px; background-color: black; margin-right: 5px;"></span> BLACK</li> <li><span style="display: inline-block; width: 10px; height: 10px; background-color: #333333; margin-right: 5px;"></span> 358</li> <li><span style="display: inline-block; width: 10px; height: 10px; background-color: #444444; margin-right: 5px;"></span> 485</li> <li><span style="display: inline-block; width: 10px; height: 10px; background-color: #555555; margin-right: 5px;"></span> 2077</li> <li><span style="display: inline-block; width: 10px; height: 10px; background-color: #666666; margin-right: 5px;"></span> 2757</li> <li><span style="display: inline-block; width: 10px; height: 10px; background-color: #777777; margin-right: 5px;"></span> SOLID BLACK</li> </ul>	<ul style="list-style-type: none"> <li><span style="border: 1px dashed black; display: inline-block; width: 10px; height: 10px; margin-right: 5px;"></span> DIE CUT</li> <li><span style="border: 1px dashed black; display: inline-block; width: 10px; height: 10px; margin-right: 5px;"></span> Coating Free</li> <li><span style="border: 1px dashed black; display: inline-block; width: 10px; height: 10px; margin-right: 5px;"></span> Kiss Cut</li> <li><span style="border: 1px dashed black; display: inline-block; width: 10px; height: 10px; margin-right: 5px;"></span> Perforation</li> </ul>	<b>Translations of Variable Data</b> Lot: Lot: Exp. Date: Exp. date: Mfg Date: Mfg. date: Price: N/A GTIN: N/A Serial Number: N/A	
<b>Previous Item Code (to be destroyed)</b> NL041DAMY00		<b>Serialization Information</b> Type: N/A Code: N/A	



**Quick Reference for Injection** — These are not complete instructions. Read the full INSTRUCTIONS FOR USE.

**Choose and Clean your injection site**



You or another person may inject into these areas.



Another person should inject into the back of your upper arm.

**Stomach area (abdomen) —**

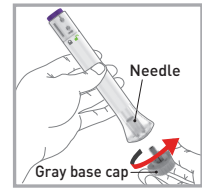
At least 2 inches away from the belly button (navel).

**Front of thigh —**

At least 2 inches above the knee and 2 inches below the groin.

Clean injection site with alcohol wipe and let dry.

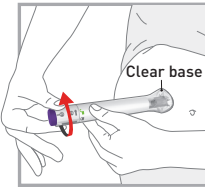
**1 Uncap the Pen**



**Twist off** the gray base cap when you are ready to inject.

**Do not** put the gray base cap back on.

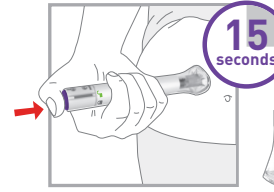
**2 Place and Unlock**



**Place** and hold the clear base flat and firmly against the skin.

**Unlock** by turning the lock ring.

**3 Press and Hold for 15 seconds**



**Press and Hold** the purple injection button and **Listen** for two loud clicks:

- first click = injection started
- second click = injection completed

The injection may take up to 15 seconds.

**Put the used Pen in a sharps container.**

**15 seconds**

Injection is complete when gray plunger is visible.

Layout Used to Develop Artwork: GLOSH009F01

PPD Information Box		ALRP Information Box	
<b>Technical Information:</b> 		<b>Translations of Variable Data</b> Lot: N/A Exp. Date: N/A Mfg Date: N/A Price: N/A GTIN: N/A Serial Number: N/A	
<b>Previous Item Code (to be destroyed)</b> NL041DAMY00		<b>Serialization Information</b> Type: N/A Code: N/A	
<i>Lot</i>			