

Contains: 1 vial (powder), 1 prefilled syringe (sterile water), 1 vial adaptor, 1 dosing syringe, 1 needle, 4 alcohol wipes, 1 package insert, 1 instruction for use.

Reconstitute prior to administration. Refer to the Instructions for Use for detailed instructions on the proper preparation and administration of WINREVAIR.
For Dosage and Administration, Contraindications, Precautions/Warnings, see accompanying package insert.



For subcutaneous injection
For single use only

1 Vial Pack



WINREVAIR
60 mg
Powder and Solvent for Solution for Injection
sotatercept

CONTROLLED MEDICINE

MY_NNN

EXP
LOT
MFG

Each vial contains 60 mg of sotatercept. The concentration of the reconstituted solution is 50 mg/mL and 1.2 mL can be withdrawn.
Keep out of the sight and reach of children.
Jauhii ubat daripada kanak-kanak.
Store refrigerated at 2°C to 8°C in the original carton to protect from light. Do not freeze. Use this medicine immediately or no longer than 4 hours after reconstitution.
Copyright © 2025 Merck & Co., Inc., Rahway, NJ, USA and its affiliates. All rights reserved.

WINREVAIR

Powder and Solvent for Solution for Injection
For subcutaneous injection
For single use only

MAL26026001ACZ

01010101
05-1
059

60 mg

sotatercept



WINREVAIR

Powder and Solvent for Solution for Injection
For subcutaneous injection
For single use only

Contains: 1 vial (powder), 1 prefilled syringe (sterile water), 1 vial adaptor, 1 dosing syringe, 1 needle, 4 alcohol wipes, 1 package insert, 1 instruction for use.

60 mg

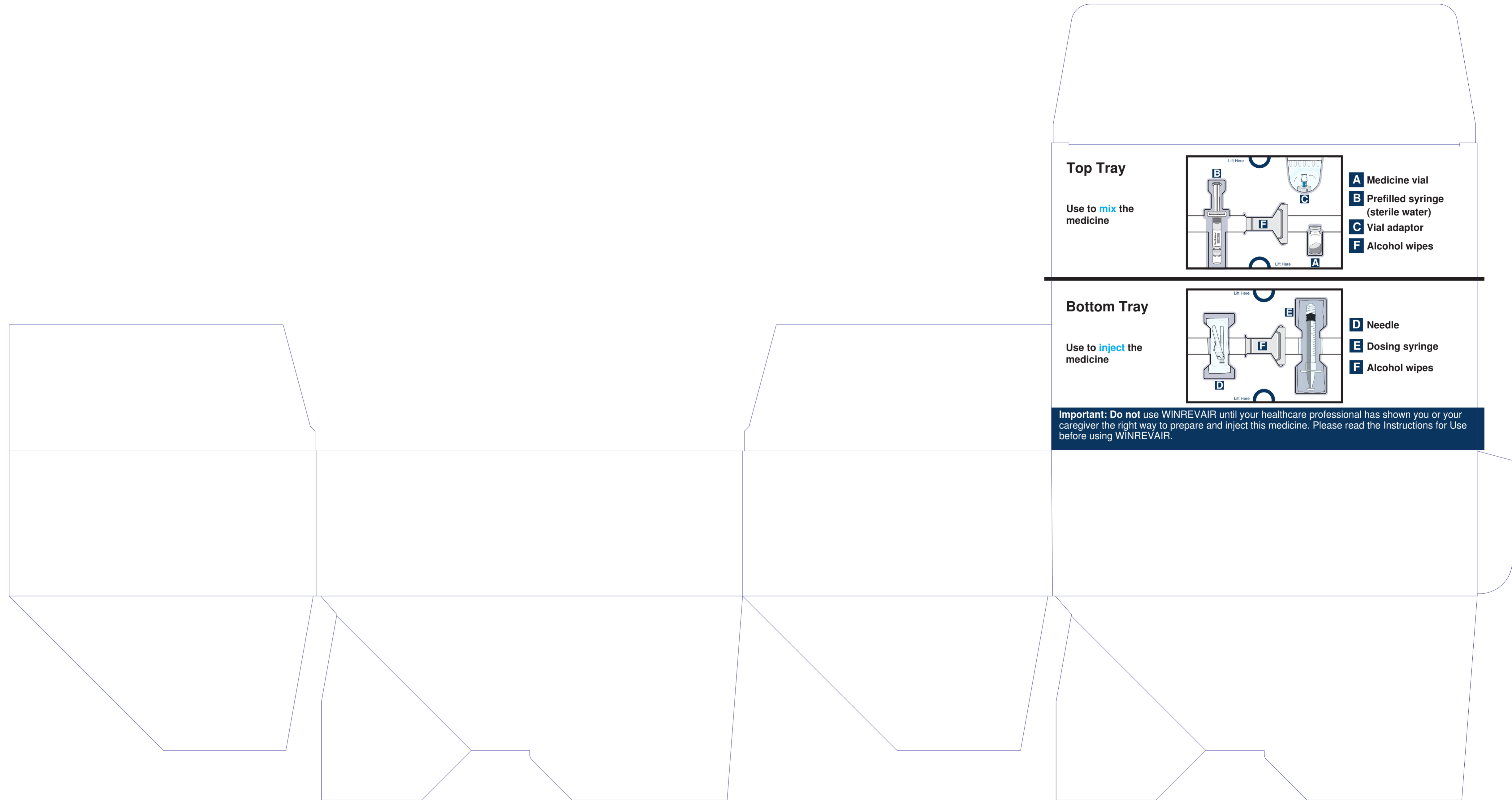
sotatercept



Product Registration Holder:
MERCK SHARP & DOHME (MALAYSIA) SDN. BHD.
Lot No. B-22-1 & B-22-2, Level 22
The Asceni, Paradigm No. 1
Jalan SS 7/26A, Kelana Jaya
47301 Petaling Jaya
Selangor, Malaysia

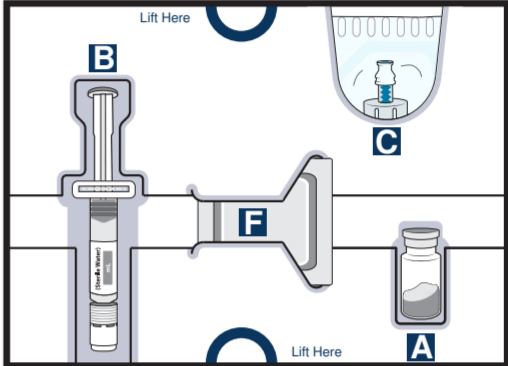
Manufactured by:
Patheon Italia S.p.A
Viale G.B. Stucchi, 110-20900 Monza (MB), Italy

Packed and Released by:
MERCK SHARP & DOHME B.V.
Waarderweg 39, Haarlem, 2031 BN, Netherlands



Top Tray

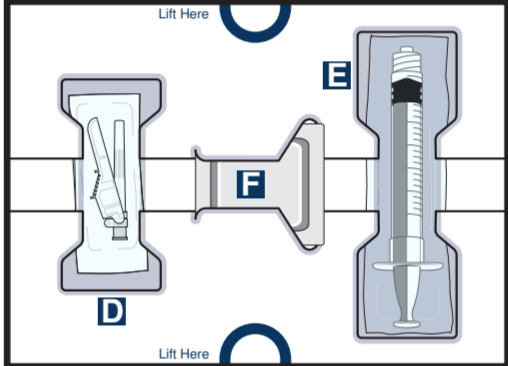
Use to **mix** the medicine



- A** Medicine vial
- B** Prefilled syringe (sterile water)
- C** Vial adaptor
- F** Alcohol wip

Bottom Tray

Use to **inject** the medicine



- D** Needle
- E** Dosing syringe
- F** Alcohol wip

Important: Do not use WINREVAIR until your healthcare professional has shown you or your caregiver the right way to prepare and inject this medicine. Please read the Instructions for Use before using WINREVAIR.