

000000

Contains: 2 vials (powder), 2 prefilled syringes (sterile water), 2 vial adaptors, 1 dosing syringe, 1 needle, 8 alcohol wipes, 1 package insert, 1 instruction for use.

Reconstitution and administration of WINREVAIR.  
 Preparation prior to administration. Refer to the Instructions for Use for detailed instructions on the proper package insert.

For Dosage and Administration, Contraindications, Precautions/Warnings, see accompanying package insert.

**MSD**

For single use only

For subcutaneous injection

**sotatercept**

2 Vials Pack

**WINREVAIR®**  
60 mg

Powder and Solvent for Solution for Injection

**CONTROLLED MEDICINE**

Each vial contains 60 mg of sotatercept. The concentration of the reconstituted solution is 50 mg/mL and 1.2 mL can be withdrawn.

Keep out of the sight and reach of children.  
 Jauhi ubat daripada kanak-kanak.

Store refrigerated at 2°C to 8°C in the original carton to protect from light. Do not freeze. Use this medicine immediately or no longer than 4 hours after reconstitution.

Copyright © 2025 Merck & Co., Inc., Rahway, NJ, USA and its affiliates. All rights reserved.

EXP  
 LOT  
 MFG

000000  
 11-11  
 500

**WINREVAIR®**

Powder and Solvent for Solution for Injection

For subcutaneous injection

For single use only

**60 mg**  
**sotatercept**

**MSD**

MAL26026001ACZ

**WINREVAIR®**

Powder and Solvent for Solution for Injection

For subcutaneous injection

For single use only

**60 mg**  
**sotatercept**

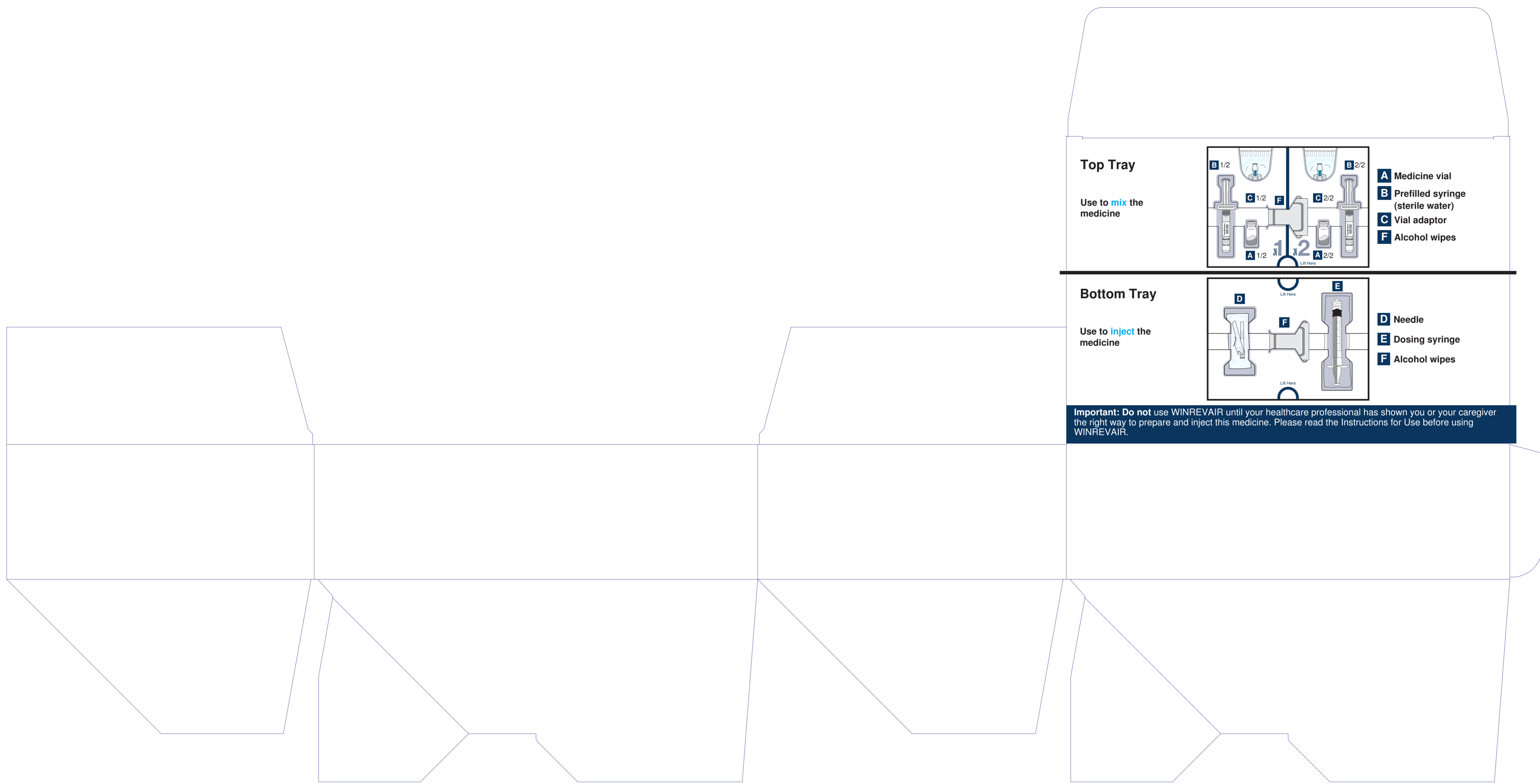
**MSD**

Contains: 2 vials (powder), 2 prefilled syringes (sterile water), 2 vial adaptors, 1 dosing syringe, 1 needle, 8 alcohol wipes, 1 package insert, 1 instruction for use.

Product Registration Holder:  
**MERCK SHARP & DOHME (MALAYSIA) SDN. BHD.**  
 Lot No. B-22-1 & B-22-2, Level 22  
 The Ascend, Paradigm No. 1  
 Jalan SS 7/26A, Kelana Jaya  
 47301 Petaling Jaya  
 Selangor, Malaysia

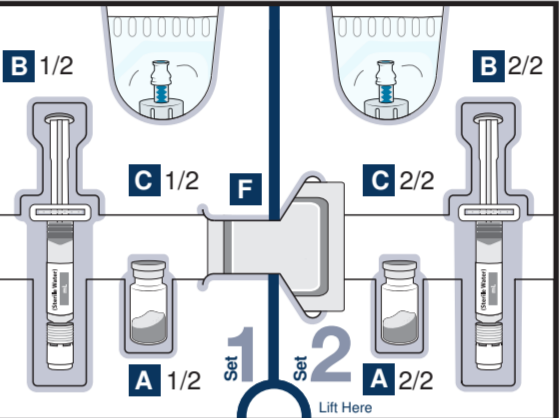
Manufactured by:  
**Patheon Italia S.p.A.**  
 Viale G.B. Stucchi, 110-20900 Monza (MB), Italy

Packed and Released by:  
**MERCK SHARP & DOHME B.V.**  
 Waarderweg 39, Haarlem, 2031 BN, Netherlands



**Top Tray**

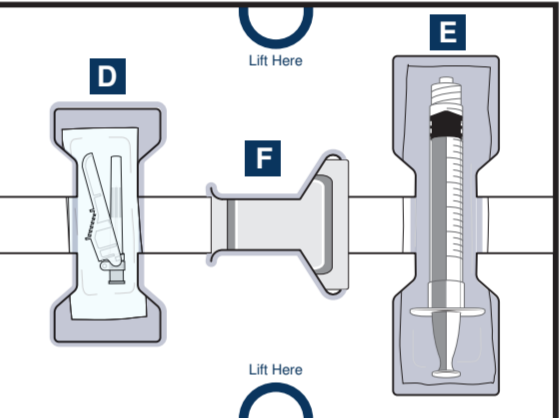
Use to **mix** the medicine



- A** Medicine vial
- B** Prefilled syringe (sterile water)
- C** Vial adaptor
- F** Alcohol wipes

**Bottom Tray**

Use to **inject** the medicine



- D** Needle
- E** Dosing syringe
- F** Alcohol wipes

**Important: Do not** use WINREVAIR until your healthcare professional has shown you or your caregiver the right way to prepare and inject this medicine. Please read the Instructions for Use before using WINREVAIR.