

Contains: 1 vial (powder), 1 prefilled syringe (sterile water), 1 vial adaptor, 1 dosing syringe, 1 needle, 4 alcohol wipes, 1 package insert, 1 instruction for use.

Reconstitute prior to administration. Refer to the Instructions for Use for detailed instructions on the proper preparation and administration of WINREVAIR.  
For Dosage and Administration, Contraindications, Precautions/Warnings, see accompanying package insert.



For subcutaneous injection  
For single use only



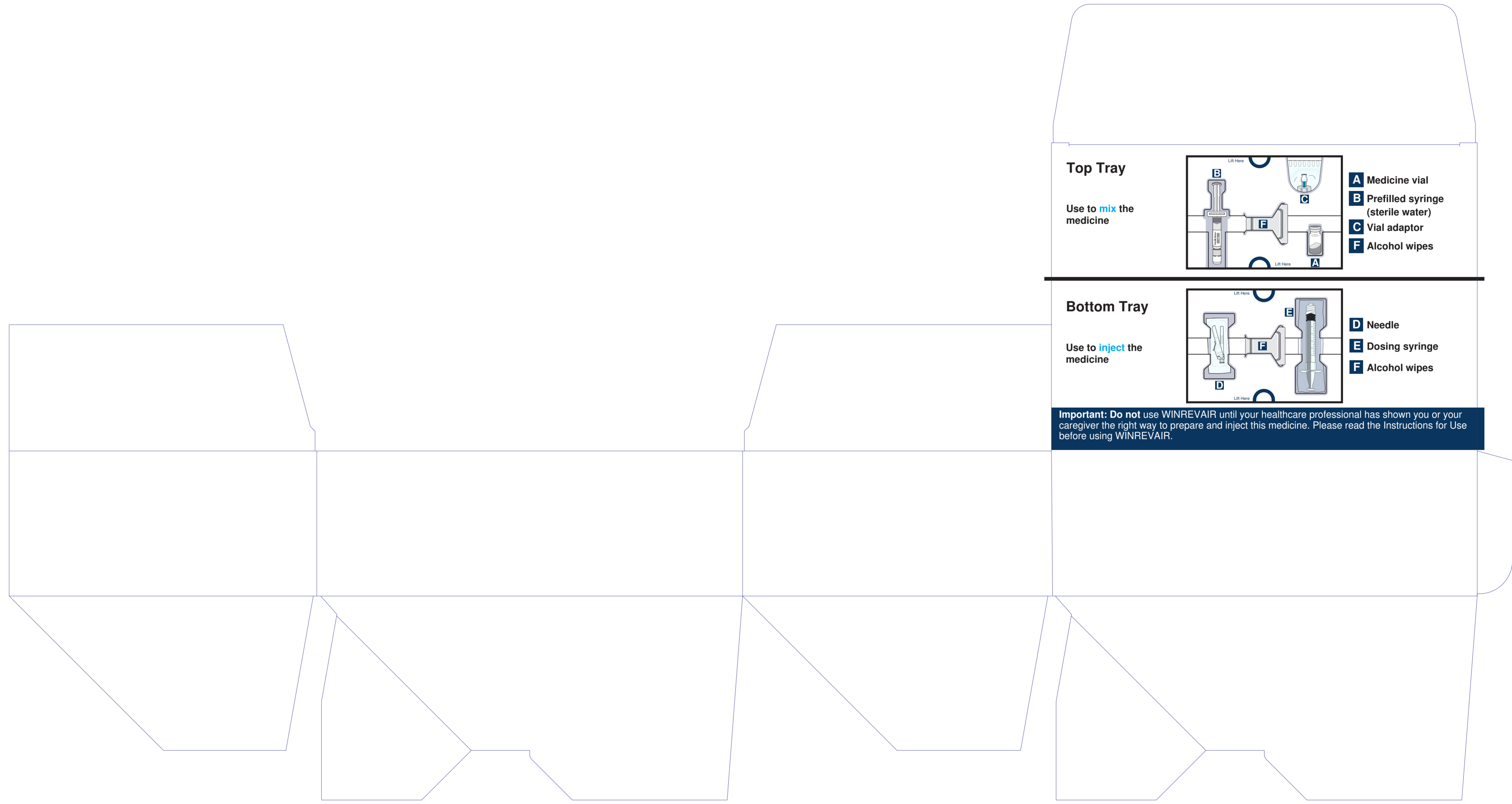
**WINREVAIR**  
60 mg  
Powder and Solvent for Solution for Injection

**CONTROLLED MEDICINE**  
Each vial contains 60 mg of sotatercept. The concentration of the reconstituted solution is 50 mg/mL and 1.2 mL can be withdrawn.  
**Keep out of the sight and reach of children.**  
**Jauhii ubat daripada kanak-kanak.**  
Store refrigerated at 2°C to 8°C in the original carton to protect from light. Do not freeze. Use this medicine immediately or no longer than 4 hours after reconstitution.  
EXP  
LOT  
MFG  
Copyright © 2025 Merck & Co., Inc., Rahway, NJ, USA and its affiliates. All rights reserved.

**WINREVAIR**  
60 mg  
sotatercept  
MSD  
Powder and Solvent for Solution for Injection  
For subcutaneous injection  
For single use only  
MAL26026001ACZ

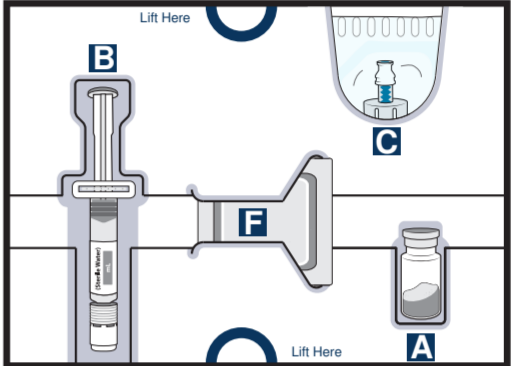
**WINREVAIR**  
60 mg  
sotatercept  
MSD  
Powder and Solvent for Solution for Injection  
For subcutaneous injection  
For single use only  
Contains: 1 vial (powder), 1 prefilled syringe (sterile water), 1 vial adaptor, 1 dosing syringe, 1 needle, 4 alcohol wipes, 1 package insert, 1 instruction for use.

Product Registration Holder:  
**MERCK SHARP & DOHME (MALAYSIA) SDN. BHD.**  
Lot No. B-22-1 & B-22-2, Level 22  
The Asceni, Paradigm No. 1  
Jalan SS 7/26A, Kelana Jaya  
47301 Petaling Jaya  
Selangor, Malaysia  
Manufactured by:  
**Patheon Italia S.p.A**  
Viale G.B. Stucchi, 110-20900 Monza (MB), Italy  
Packed and Released by:  
**MERCK SHARP & DOHME B.V.**  
Waarderweg 39, Haarlem, 2031 BN, Netherlands



**Top Tray**

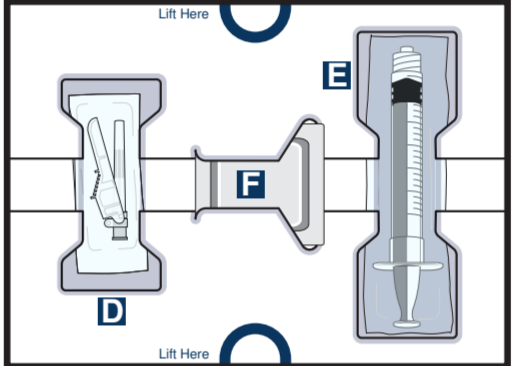
Use to **mix** the medicine



- A** Medicine vial
- B** Prefilled syringe (sterile water)
- C** Vial adaptor
- F** Alcohol wipes

**Bottom Tray**

Use to **inject** the medicine



- D** Needle
- E** Dosing syringe
- F** Alcohol wipes

**Important:** Do not use WINREVAIR until your healthcare professional has shown you or your caregiver the right way to prepare and inject this medicine. Please read the Instructions for Use before using WINREVAIR.