

# Actrapid®

100 IU/ml

Solution for injection in pre-filled pen, FlexPen®

Insulin human (rDNA)

Consumer Medication Information Leaflet (RiMUP)

## What is in this leaflet

1. What Actrapid® is used for
2. How Actrapid® works
3. Before you use Actrapid®
4. How to use Actrapid®
5. While you are using it
6. Side effects
7. Storage and disposal of Actrapid®
8. Product description
9. Manufacturer
10. Product Registration Holder
11. Date of revision

### 1. What Actrapid® is used for

**Actrapid® is human insulin used to treat diabetes.** Diabetes mellitus is a disease where your body does not produce enough insulin to control the level of your blood sugar.

### 2. How Actrapid® works

Actrapid® is a fast-acting insulin. This means that it will start to lower your blood sugar about ½ hour after you take it, and the effect will last for approximately 8 hours. Actrapid® is often given in combination with longer-acting insulin products.

### 3. Before you use Actrapid®

#### - When you must not use it

- ▶ **In insulin infusion pumps.**
- ▶ **If you are allergic (hypersensitive) to human insulin or any of the other ingredients in Actrapid®** (see section 8. *Product description*).
- ▶ **If you suspect hypoglycaemia** (low blood sugar) is starting (see section 4. *How to use Actrapid®*).
- ▶ **If the FlexPen® is dropped, damaged or crushed.**

▶ **If it has not been stored correctly** or been frozen (see section 7. *Storage and Disposal of Actrapid®*).

▶ **If the insulin does not appear clear and colourless.**

#### - Before you start to use it

▶ **Check the label to make sure** it is the right type of insulin.

▶ **Always use a new needle** for each injection to prevent contamination.

▶ **Needles and Actrapid® FlexPen® must not be shared.**

#### - Taking other medicines

Some medicines affect the way glucose works in your body and this may influence your insulin dose. Listed below are the most common medicines which may affect your insulin treatment. Tell your doctor, nurse or pharmacist if you are taking or have recently taken any other medicines, including medicines obtained without a prescription. In particular, you should tell your doctor if you are using any medicine mentioned below that may affect your blood sugar level.

**Your need for insulin may change** if you also take: other medicines for treatment of diabetes; monoamine oxidase inhibitors (MAOI); beta-blockers; angiotensin-converting enzyme (ACE) inhibitors; acetylsalicylic acid; anabolic steroids; sulphonamides; oral contraceptives; thiazides; glucocorticoids; thyroid hormone therapy; sympathomimetics; growth hormone; danazol; octreotide or lanreotide.

**Thiazolidinediones** (class of oral antidiabetic medicines used for the treatment of type 2 diabetes mellitus). Some patients with long-standing type 2 diabetes mellitus and heart disease or previous stroke who are treated with thiazolidinediones in combination with

insulin may develop heart failure. Inform your doctor as soon as possible if you experience signs of heart failure such as unusual shortness of breath or rapid increase in weight or localised swelling (oedema).

### 4. How to use Actrapid®

#### - How much to use

Talk about your insulin needs with your doctor and nurse. Make sure you take Actrapid® FlexPen® as instructed by your doctor or nurse and follow their advice carefully. If your doctor has switched you from one type or brand of insulin to another, your dose may have to be adjusted by your doctor.

#### - When to use it

An injection should be followed within 30 minutes by a meal or snack containing carbohydrates.

#### - How to use it

**Actrapid® is administered by injection under the skin** (subcutaneously). You must never inject yourself directly into a vein (intravenously) or muscle (intramuscularly). Actrapid® FlexPen® is only suitable for injecting under the skin. Speak to your doctor if you need to inject your insulin by another method. Always vary the sites you inject within the same region, to reduce the risk of developing lumps or skin pitting (see section 6. *Side effects*). The best places to give yourself an injection are: the front of your waist (abdomen); your buttocks; the front of your thighs or upper arms. Your insulin will work more quickly if you inject it around the waist (abdomen).

**Injecting the insulin:** See overleaf for detailed instructions.

# Actrapid®

100 IU/ml

Solution for injection in pre-filled pen, FlexPen®

Insulin human (rDNA)

Consumer Medication Information Leaflet (RiMUP)

---

## - How long to use it

Continue taking Actrapid® for as long as your doctor recommends.

Inadequate dosing or discontinuation of treatment, especially in type 1 diabetes, may lead to hyperglycemia and diabetic ketoacidosis.

## - If you forget to use it

Your blood sugar may get too high (this is called hyperglycaemia).

**The warning signs** appear gradually. They include: increased urination; feeling thirsty; losing your appetite; feeling sick (nausea or vomiting); feeling drowsy or tired; flushed, dry skin; dry mouth and a fruity (acetone) smell of the breath.

**If you get any of these signs**, test your blood sugar level and test your urine for ketones if you can. Then seek medical advice straight away.

These may be signs of a very serious condition called diabetic ketoacidosis. If you do not treat it, this could lead to diabetic coma and eventually death.

## Causes of hyperglycaemia

- ▶ Having forgotten to take your insulin
- ▶ Repeatedly taking less insulin than you need
- ▶ An infection or a fever
- ▶ Eating more than usual
- ▶ Less exercise than usual

## - If you stop taking it

This could lead to severe hyperglycaemia and ketoacidosis. Do not stop taking your insulin without speaking to a doctor, who will tell you what needs to be done.

If you have any further questions on the use of this product, ask your doctor or pharmacist.

## - If you use too much (overdose)

Your blood sugar may get too low (this is called hypoglycaemia).

**The warning signs of a hypo** may come on suddenly and can include: cold sweat; cool pale skin; headache; rapid heartbeat; feeling sick; feeling very hungry; temporary changes in vision; drowsiness; unusual tiredness and weakness; nervousness or tremor; feeling anxious; feeling confused; difficulty in concentrating.

**If you get any of these signs**, eat glucose tablets or a high sugar snack (sweets, biscuits, fruit juice), then rest.

## Causes of a hypoglycaemia

You get a hypo if your blood sugar gets too low. This might happen:

- ▶ If you take too much insulin.
- ▶ If you eat too little or miss a meal.
- ▶ If you exercise more than usual.

## Using glucagon

You may recover more quickly from unconsciousness with an injection of the hormone glucagon by someone who knows how to use it. If you are given glucagon, you will need glucose or a sugary snack as soon as you are conscious. If you do not respond to glucagon treatment, you will have to be treated in a hospital. Seek medical advice after an injection of glucagon; you need to find the reason for your hypo to avoid getting more.

## 5. While you are using it

### - Things you must do

Eat a meal or snack containing carbohydrates within 30 minutes of the injection.

It is recommended that you measure your blood sugar regularly.

### - Things you must not do

**Do not take any insulin** if you feel a hypo coming on. Carry glucose tablets, sweets, biscuits or fruit juice with you, just in case.

**Tell your relatives, friends and close colleagues** that if you pass out (become unconscious), they must turn you on your side and seek medical advice straight away. They **must not** give you any food or drink as it could choke you.

▶ **If severe hypoglycaemia** is not treated, it can cause brain damage (temporary or permanent) and even death.

▶ **If you have a hypo** that makes you pass out, or a lot of hypos, talk to your doctor. The amount or timing of insulin, food or exercise may need to be adjusted.

### - Things to be careful of

▶ **If you have trouble** with your kidneys or liver, or with your adrenal, pituitary or thyroid glands.

▶ **If you drink alcohol** watch for signs of a hypo and never drink alcohol on an empty stomach.

▶ **If you exercise** more than usual or if you want to change your usual diet, as this may affect your blood sugar level.

▶ **If you are ill** carry on taking your insulin and consult your doctor.

▶ **If you are going abroad**, travelling over time zones may affect your insulin needs and the timing of your injections. Consult your doctor if you are planning such travelling.

## Pregnancy and breast-feeding

There is no restriction on treatment with Actrapid® during pregnancy or breast-feeding, please contact your

# Actrapid®

100 IU/ml

Solution for injection in pre-filled pen, FlexPen®

Insulin human (rDNA)

Consumer Medication Information Leaflet (RiMUP)

doctor for advice.

## Driving and using machines

**If you drive or use tools or machines,** watch out for signs of a hypo. Your ability to concentrate or to react will be less during a hypo. Never drive or use machinery if you feel a hypo coming on. Discuss with your doctor whether you can drive or use machines at all, if you have a lot of hypos or if you find it hard to recognise hypos.

## Skin changes at the injection site

The injection site should be rotated to help prevent changes to the fatty tissue under the skin, such as skin thickening, skin shrinking or lumps under the skin. The insulin may not work very well if you inject into a lumpy, shrunken or thickened area (see section 4. *How to use Actrapid®*). Tell your doctor if you notice any skin changes at the injection site. Tell your doctor if you are currently injecting into these affected areas before you start injecting in a different area. Your doctor may tell you to check your blood sugar more closely, and to adjust your insulin or your other antidiabetic medications dose.

## 6. Side effects

Like all medicines, Actrapid® can cause side effects, although not everybody gets them.

Side effects may occur with certain frequencies, which are defined as follows:

- ▶ Very common: affects more than 1 user in 10
- ▶ Uncommon: affects less than 1 user in 100
- ▶ Very rare: affects less than 1 user in 10,000

## Very common side effects

### Low blood sugar (hypoglycaemia).

See the advice in 'If you use too much (overdose)' under section 4. *How to use Actrapid®*.

## Uncommon side effects

**Vision problems.** When you first start your insulin treatment, it may disturb your vision, but the disturbance is usually temporary.

### Skin changes at the injection site.

If you inject insulin at the same place, the fatty tissue may shrink (lipoatrophy) or thicken (lipohypertrophy) (in less than 1 patient in 100). Lumps under the skin may also be caused by build-up of a protein called amyloid (cutaneous amyloidosis; how often this occurs is not known). The insulin may not work very well if you inject into a lumpy, shrunken or thickened area. Change the injection site with each injection to help prevent these skin changes.

**Signs of allergy.** Reactions (redness, swelling, itching) at the injection site may occur (local allergic reactions). These usually disappear after a few weeks of taking your insulin. If they do not disappear, see your doctor.

### Seek medical advice immediately:

- ▶ If signs of allergy spread to other parts of the body, or
- ▶ If you suddenly feel unwell, and you: start sweating; start being sick (vomiting); have difficulty in breathing; have a rapid heartbeat; feel dizzy.

**Painful neuropathy** (pain due to nerve damage). If your blood sugar level improves very fast, you may get nerve related pain, this is called acute painful neuropathy and is usually transient.

**Swollen joints.** When you start taking insulin, water retention may cause swelling around your ankles and other joints. Normally this soon disappears.

## Very rare side effects

**Diabetic retinopathy** (eye disease related to diabetes which can lead to loss of vision). If you have diabetic retinopathy and your blood sugar levels improve very fast, the retinopathy may get worse. Ask your doctor about this.

**Serious allergic reaction** to Actrapid® or one of its ingredients (called a systemic allergic reaction). See also the warning in section 3. *Before you use Actrapid®*.

If any of the side effects get serious, or if you notice any side effects not listed in this leaflet, please tell your doctor, nurse or pharmacist.

You may report any side effects or adverse drug reactions directly to the National Centre for Adverse Drug Reaction Monitoring by visiting the website [npra.gov.my](http://npra.gov.my) [Consumers → Reporting Side Effects to Medicines (ConSERF) or Vaccines (AEFI)].

## 7. Storage and disposal of Actrapid®

### - Storage

Keep out of the reach and sight of children.

Do not use Actrapid® after the expiry date which is stated on the label and the carton after 'Expiry'. The expiry date refers to the last day of that month.

**Actrapid® FlexPen® that is not being used** is to be stored in the refrigerator at 2°C - 8°C, away from the cooling element. Do not freeze.

# Actrapid®

100 IU/ml

Solution for injection in pre-filled pen, FlexPen®

Insulin human (rDNA)

Consumer Medication Information Leaflet (RiMUP)

---

## - MAL numbers

**Actrapid® FlexPen® that is being used** or carried as a spare is not to be kept in a refrigerator. You can carry it with you and keep it at room temperature (below 30°C) for up to 6 weeks.

MAL13115136ASZ  
MAL19986462AZ  
MAL21066007ASZ

Always keep the pen cap on your FlexPen® when you are not using it in order to protect it from light.

## 9. Manufacturers

Novo Nordisk A/S  
Novo Allé, DK-2880,  
Bagsværd, Denmark.

Actrapid® must be protected from excessive heat and light.

Novo Nordisk Produção Farmacêutica do Brasil Ltda.  
Avenida C, 1413, Distrito Industrial Montes Claros - Minas Gerais  
Brazil 39404-004

## - Disposal

Medicines should not be disposed of via wastewater or household waste. Ask your pharmacist how to dispose of medicines no longer required. These measures will help to protect the environment.

Novo Nordisk Production SAS  
45 Avenue d'Orléans, F-28000  
Chartres, France

## 8. Product Description

## 10. Product Registration Holder

### - What it looks like

The solution for injection comes as a clear, colourless, aqueous solution.

Novo Nordisk Pharma (Malaysia) Sdn. Bhd.  
Menara 1 Sentrum, Level 16 No. 201  
Jalan Tun Sambanthan 50470 Kuala Lumpur  
Malaysia

It is supplied in packs of 1, 5 or 10 pre-filled pens of 3 ml (not all packs may be marketed).

## 11. Date of revision

15/11/2021

## - Ingredients

### Serial number

-Active ingredient

NPRA(R3/01)15112021/0150

Insulin human, made by recombinant biotechnology. 1 ml contains 100 IU of insulin human. 1 pre-filled pen contains 3 ml equivalent to 300 IU.

-Inactive ingredients

Zinc chloride, glycerol, metacresol, sodium hydroxide, hydrochloric acid, and water for injections.

# Actrapid®

100 IU/ml

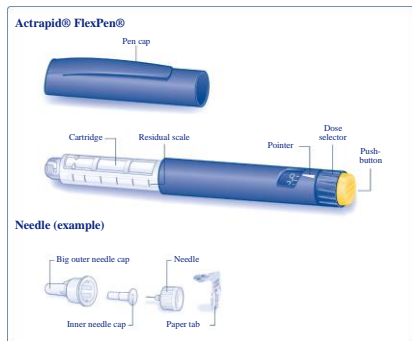
Solution for injection in pre-filled pen, FlexPen®

Insulin human (rDNA)

## Instructions on how to use Actrapid® solution for injection in FlexPen®

Read the following instructions carefully before using your FlexPen®. If you do not follow the instructions carefully, you may get too little or too much insulin, which can lead to too high or too low blood sugar level.

Your FlexPen® is a pre-filled dial-a-dose insulin pen. You can select doses from 1 to 60 units in increments of 1 unit. FlexPen® is designed to be used with NovoFine® or NovoTwist® disposable needles up to a length of 8 mm. As a precautionary measure, always carry a spare insulin delivery device in case your FlexPen® is lost or damaged.



## Caring for your pen

Your FlexPen® must be handled with care.

If it is dropped, damaged or crushed, there is a risk of insulin leakage. This may cause inaccurate dosing, which can lead to too high or too low blood sugar level.

You can clean the exterior of your FlexPen® by wiping it with a medicinal swab. Do not soak it, wash or lubricate it as it may damage the pen.

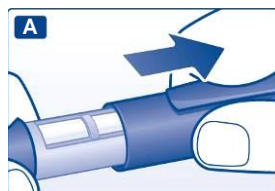
Do not refill your FlexPen®. Once

empty, it must be disposed of.

## Preparing your Actrapid® FlexPen®

**Check the name and coloured label of your pen to make sure that it contains the correct type of insulin.** This is especially important if you take more than one type of insulin. If you take the wrong type of insulin, your blood sugar level may get too high or too low.

**A** Pull off the pen cap (see A).



**B** Remove the paper tab from a new disposable needle.

Screw the needle straight and tightly onto your FlexPen®.

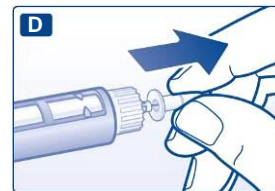


**C** Pull off the big outer needle cap and keep it for later.



**D** Pull off the inner needle cap and dispose of it.

Never try to put the inner needle cap back on the needle. You may stick yourself with the needle.



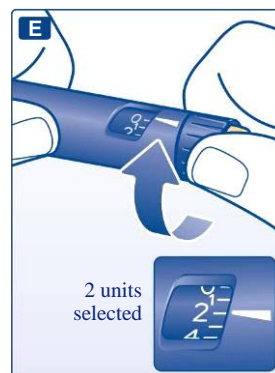
⚠ Always use a new needle for each injection. This reduces the risk of contamination, infection, leakage of insulin, blocked needles and inaccurate dosing.

⚠ Be careful not to bend or damage the needle before use.

## Checking the insulin flow

**E** Prior to each injection, small amounts of air may collect in the cartridge during normal use. To avoid injection of air and ensure proper dosing:

Turn the dose selector to select 2 units.



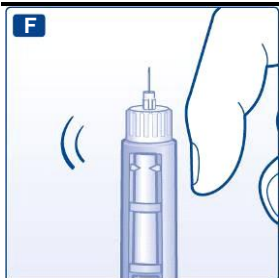
**F** Hold your FlexPen® with the needle pointing upwards and tap the cartridge gently with your finger a few times to make any air bubbles collect at the top of the cartridge.

# Actrapid®

100 IU/ml

Solution for injection in pre-filled pen, FlexPen®

Insulin human (rDNA)



**G**  
Keeping the needle upwards, press the push-button all the way in. The dose selector returns to 0.

A drop of insulin should appear at the needle tip. If not, change the needle and repeat the procedure no more than 6 times.

If a drop of insulin still does not appear, the pen is defective, and you must use a new one.



⚠ Always make sure that a drop appears at the needle tip before you inject. This makes sure that the insulin flows. If no drop appears, you will not inject any insulin, even though the dose selector may move. This may indicate a blocked or damaged needle.

⚠ Always check the flow before you inject. If you do not check the flow, you may get too little insulin or no insulin at all. This may lead to too high blood sugar

level.

## Selecting your dose

**H**  
**Check that the dose selector is set at 0.**

Turn the dose selector to select the number of units you need to inject.

The dose can be corrected either up or down by turning the dose selector in either direction until the correct dose lines up with the pointer. When turning the dose selector, be careful not to push the push-button as insulin will come out.

You cannot select a dose larger than the number of units left in the cartridge.



⚠ Always use the dose selector and the pointer to see how many units you have selected before injecting the insulin.

⚠ Do not count the pen clicks. If you select and inject the wrong dose, your blood sugar level may get too high or too low. Do not use the residual scale, it only shows approximately how much insulin is left in your pen.

## Making the injection

**I**  
**Insert the needle into your skin. Use the injection technique shown by your doctor or nurse.**

Inject the dose by pressing the push-button all the way in until 0 lines up with the pointer. Be careful only to push the push-button when injecting.

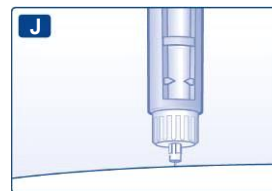
Turning the dose selector will not inject insulin.



**J**  
Keep the push-button fully depressed and let the needle remain under the skin for at least 6 seconds. This will make sure you get the full dose.

Withdraw the needle from the skin, then release the pressure on the push-button.

Always make sure that the dose selector returns to 0 after the injection. If the dose selector stops before it returns to 0, the full dose has not been delivered, which may result in too high blood sugar level.



**K**  
Lead the needle into the big outer needle cap without touching it. When

# Actrapid®

100 IU/ml

Solution for injection in pre-filled pen, FlexPen®

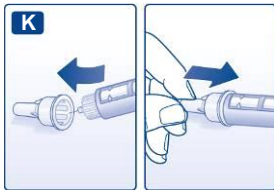
Insulin human (rDNA)

Consumer Medication Information Leaflet (RiMUP)

---

the needle is covered, carefully push the big outer needle cap completely on and then unscrew the needle.

Dispose of it carefully and put the pen cap back on.



⚠ Always remove the needle after each injection and store your FlexPen® without the needle attached. This reduces the risk of contamination, infection, leakage of insulin, blocked needles and inaccurate dosing.

## Further important information

- ⚠ Caregivers must be very careful when handling used needles – to reduce the risk of needle sticks and cross-infection.
- ⚠ Dispose of your used FlexPen® carefully without the needle attached.
- ⚠ Never share your pen or your needles with other people. It might lead to cross-infection.
- ⚠ Never share your pen with other people. Your medicine might be harmful to their health.
- ⚠ Always keep your pen and needles out of sight and reach of others, especially children.