

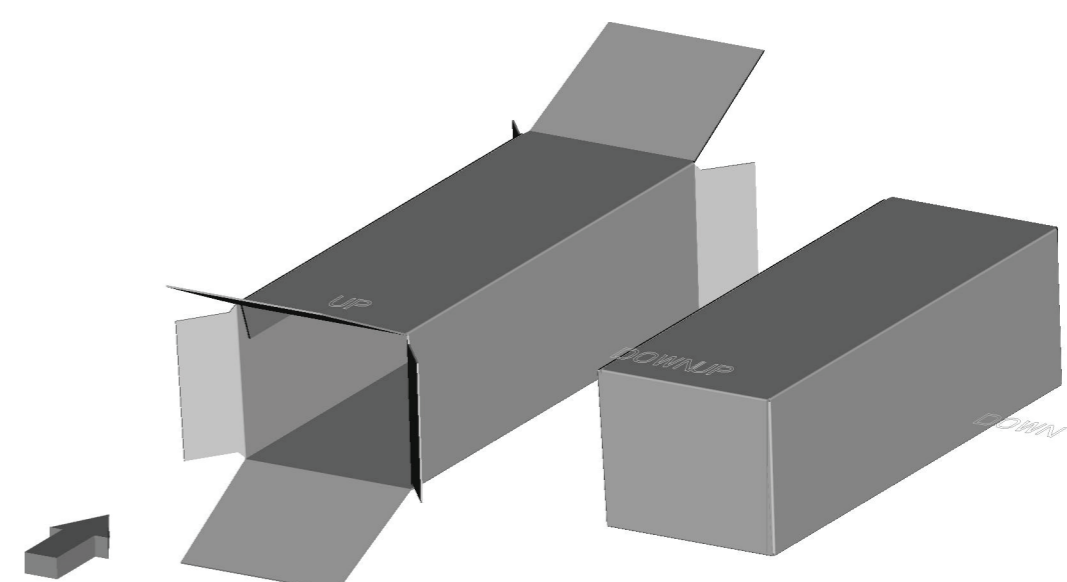
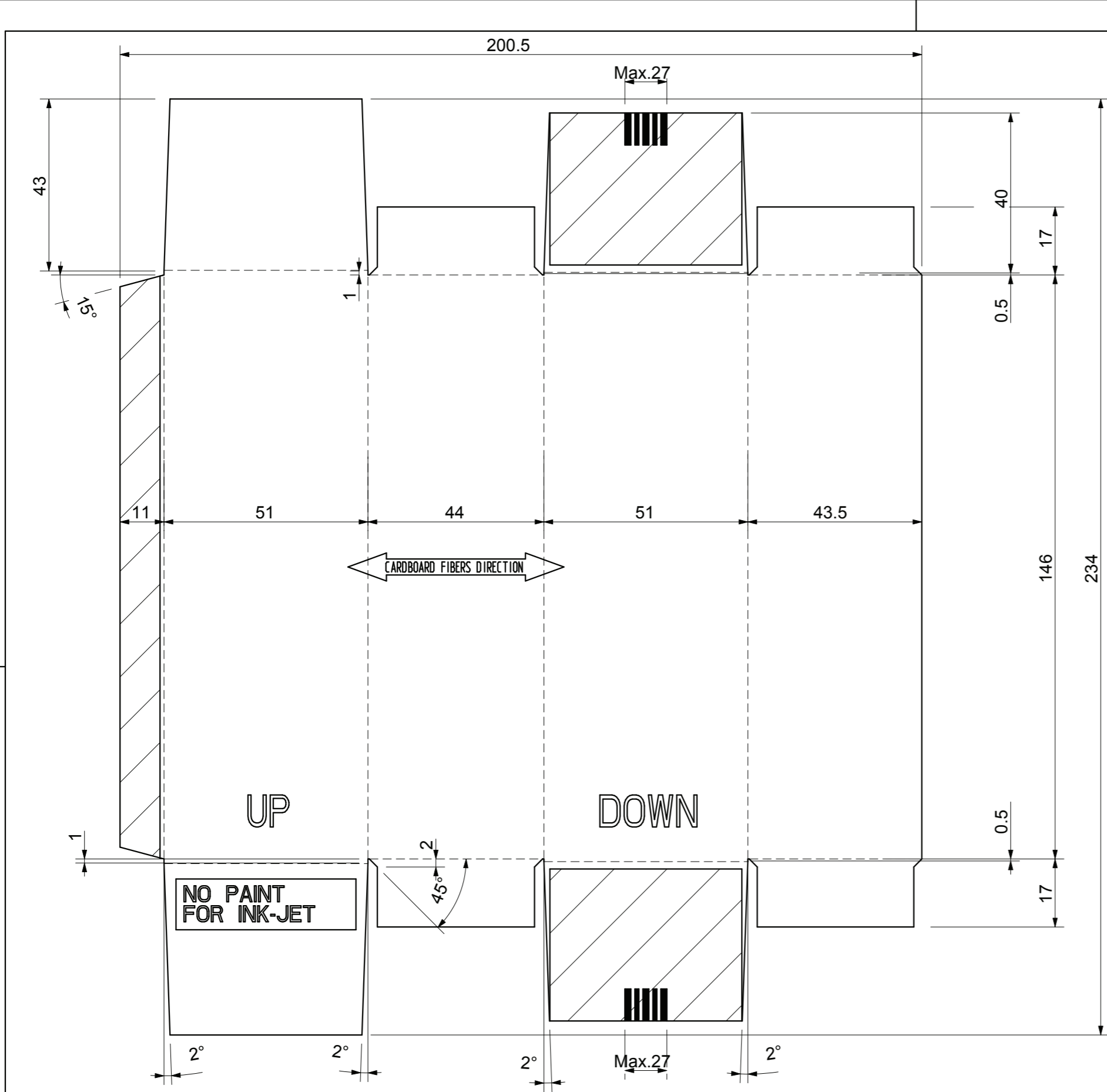




Product Name	FULPHILA 6mg/0.6mL	Component	CARTON
Dimensions	51(L)x44(W)x146(H)mm	Artwork Code	BF01088/01
Pharmacode	 11283	Country	Malaysia
Font Type	Helvetica Neue LT Pro	Specification: 320 gsm CFBB board with High Gloss Aquous Varnish, both sides double sided 3M tape with release paper : 3M'S 91031	
Font Size	6 pt		
Colors			



SCALE 1:2

FLAT-BLANK VALID FOR TESTING MATERIAL. PLEASE WAIT FOR OUR APPROVAL BEFORE ORDERING THE QUANTITY REQUIRED FOR THE PRODUCTION
 PRINTED SIDE OF CARTON IS SHOWN
 → CREASE ← (NOT THROUGH CUTS) LENGTH 10 mm AT A DISTANCE OF 10 mm + CREASING
 ▨ GLUEING TAB MUST BE BLANK
 IT IS IMPORTANT TO STORE CARTONS IN THE RIGHT WAY IN ORDER TO AVOID ANY DEFORMATION, WHICH COULD CAUSE REJECTION DURING THE PACKAGING. CARTONS MUST BE PUT ON EDGE INTO STIFF, NOT TOO BIG CASES, ON ONE OR MAX 2-3 LAYERS. THEY MUST NOT BE PACKED TOO TIGHT AND AN INTERLAYER MUST BE PRESENT. PLEASE AVOID TO STORE CARTONS INTO FLEXIBLE WRAPPINGS, BECAUSE THEIR WEIGHT WOULD PRESS DOWN ON THE CARTONS THUS DEFORMING THEM. PLEASE AVOID TO STORE CARTONS IN STACKS PLACED FLAT, BECAUSE THAT WOULD CAUSE A PERMANENT SQUASHING OF THE BOTTOM CARTONS, WHICH MAKES THEIR ERECTION DIFFICULT. IT IS ADVISABLE TO KEEP THE HUMIDITY RATE OF THE CARTON CARDBOARD AS MUCH CONSTANT AS POSSIBLE, SO THAT A REPETITIVE PERFORMANCE CAN BE OBTAINED DURING PRODUCTION. RECOMMENDED HUMIDITY RATE: 50-60%

CUSTOMER BIOCON	NATIONALITY INDIA	REV. 03	DATE 06/05/2020
<p>THIS DOCUMENT CONTAINS KNOW-HOW OF THE COMPANY THAT PRODUCED IT. ALL RIGHTS RESERVED. REPRODUCTION AND DISCLOSURE FORBIDDEN</p>	DESCRIPTION GLUED FLAPS CARTON	DRAWN UP C	CHECKED / APPROVED
	CARTON EXTERNAL DIMENSIONS 52.0-0.5 x 45.0-0.5 x 148.0-0.5	TOLLERANCES DIN 55522	SCALE 9:10
		N° SHEET 1/1	N° DRAWING AD2SC25033/..

UNI A3 / OFFER