

BIOCON FORMULATIONS
MASTER PROOF OF APPROVED PRINTED CARTON ART WORK
BASALOG 100 IU/mL, FOR COLOUR COPY
[FOR DUOPHARMA - MALAYSIA MFG.] ANNEXURE-4 [Ref. No. : BM/QA/SOP/059]
ARTWORK CODE: BM/0081/01



Size: 27 (L) x 27 (W) x 62 (H) mm (±1mm)

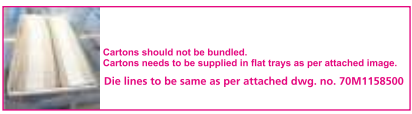
Paper: 300 gsm ± 10% (270gsm - 330gsm), Safire graphic board with high gloss aqua varnish, both side tuck-in flap opening. Die lines to be same as per attached dwg. no. 70M1158500

Note: **Magenta** color to be referred for DIE key line.

Pharma code :



- Colour:
- Pantone 292 C
 - Pantone 258 C
 - Pantone 541 C
 - Pantone 2035 C
 - Pantone BLACK C
 - Pantone 7624 C



PREPARED BY:	CHECKED BY:
DATE :	DATE :

INTERNAL ORDER NO. M3120080
 05/02/2013
 DATE
 ISSUED BY
 calzolari.p
 RIFERIMENTO SCHEMA PRODOTTO



CARTON CLOSURE TUCK-IN

F5 Straight-tuck on top

Customer: BIOCON SDN. BHD, LEVEL 7, MINER

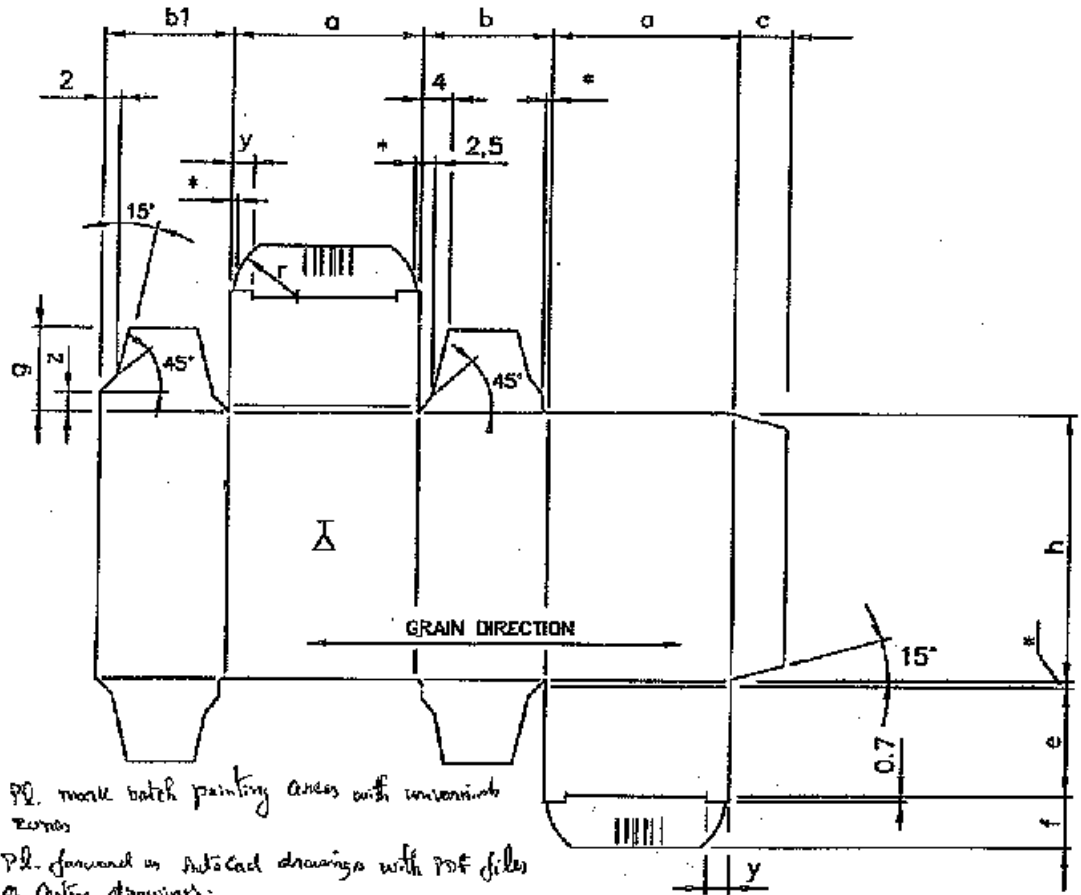
Drawing #

70M1158300

PRODUCT NAME	A	B	H	a	b	bl	c	e	f	g	h	y	z	r	m
3ml	25	25	48	24,5	24,5	24	12	23	12	17,8	46,5	5	3	14	
10ml	27	27	62	26,5	26,5	26	12	25	13	19,2	60,5	5	3	15	
TRAY	85	20	115	84,5	19,5	19	11	18,5	11	15	113,5	6	3,5	13	

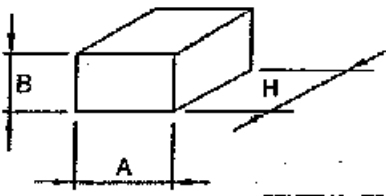
MA255
 CARTONER

MYS123101047
 INTERNAL PROJECT No.



- a) Pl. mark batch printing areas with invariant zones
- b) Pl. forward in AutoCad drawings with pdf files of carton drawings.

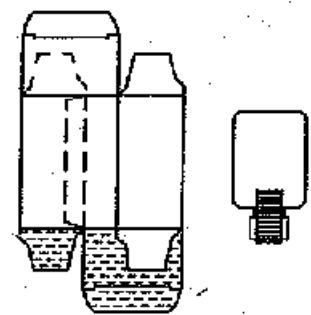
XXXX INK/DEBOSS.CODING ON UNCOATED-UNPRINTED AREA
 ||||| CODE ZONE
 * MATERIAL THICKNESS (0.3 - 0.7) ✓
 BOARD GAUGE (G) = 250-400 gr.mq. ✓



A.B.H EXTERNALS
 CARTON DIMENSIONS

GENERAL TOLLERANCE ±0.2

VIEW OF THE CARTON ON THE PRINTED SIDE



CARTON TRAVEL IN M/C

PRODUCT INSERTION

Handwritten signatures and dates:
 26/02/2013
 26/02/2013
 26/02/2013
 26/02/2013
 26/02/2013
 c) Specify max font size (readable) with max characters to be printed, as per D67FT norms.