

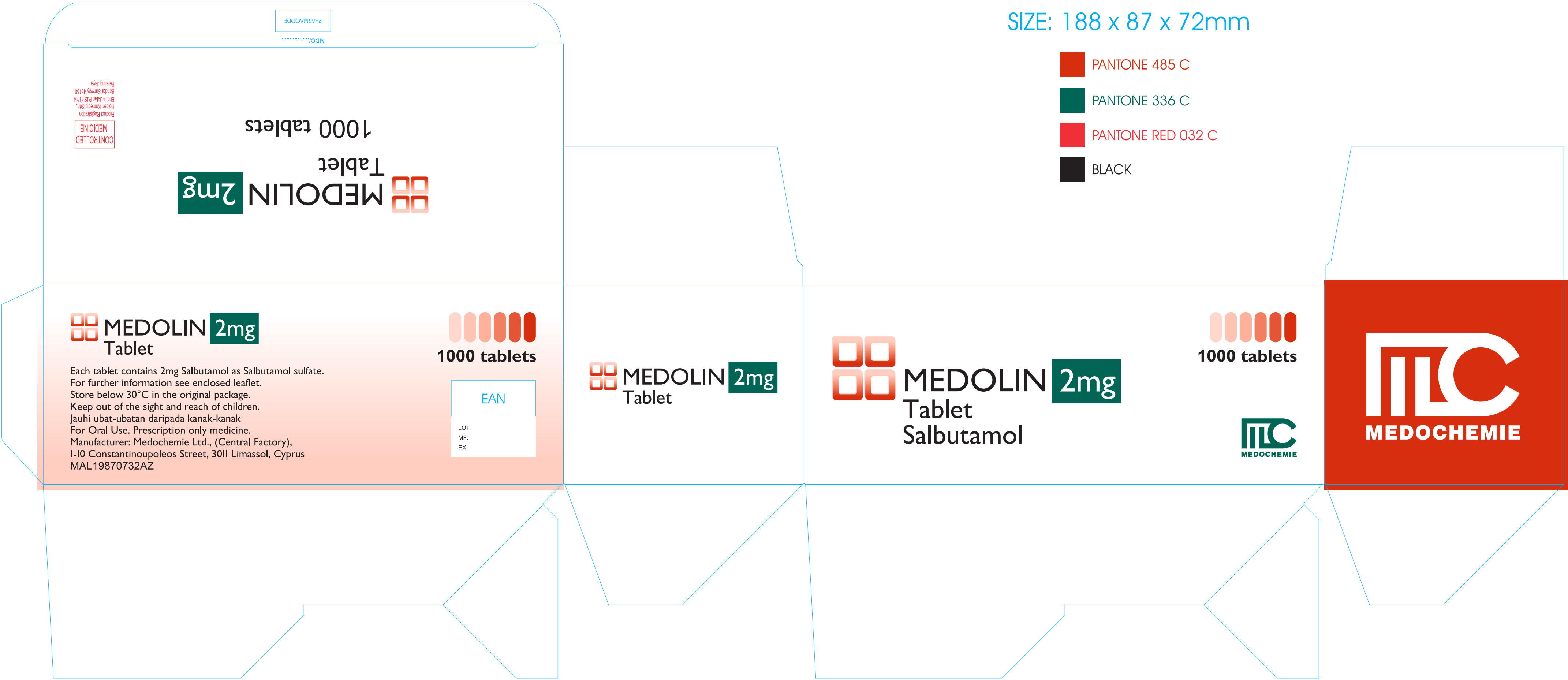
SIZE: 188 x 87 x 72mm

 PANTONE 485 C

 PANTONE 336 C

 PANTONE RED 032 C

 BLACK



1000 tablets  
MEDOLIN 2mg  
Tablet

CONTROLLED  
MEDICINE

MEDOLIN 2mg  
Tablet

1000 tablets

Each tablet contains 2mg Salbutamol as Salbutamol sulfate.  
For further information see enclosed leaflet.  
Store below 30°C in the original package.  
Keep out of the sight and reach of children.  
Jauhi ubat-ubatan daripada kanak-kanak  
For Oral Use. Prescription only medicine.  
Manufacturer: Medochemie Ltd., (Central Factory),  
1-10 Constantinoupoleos Street, 3011 Limassol, Cyprus  
MAL19870732AZ

EAN  
LOT:  
MF:  
EX:

MEDOLIN 2mg  
Tablet

MEDOLIN 2mg  
Tablet  
Salbutamol

1000 tablets

MEDOCHEMIE

MEDOCHEMIE