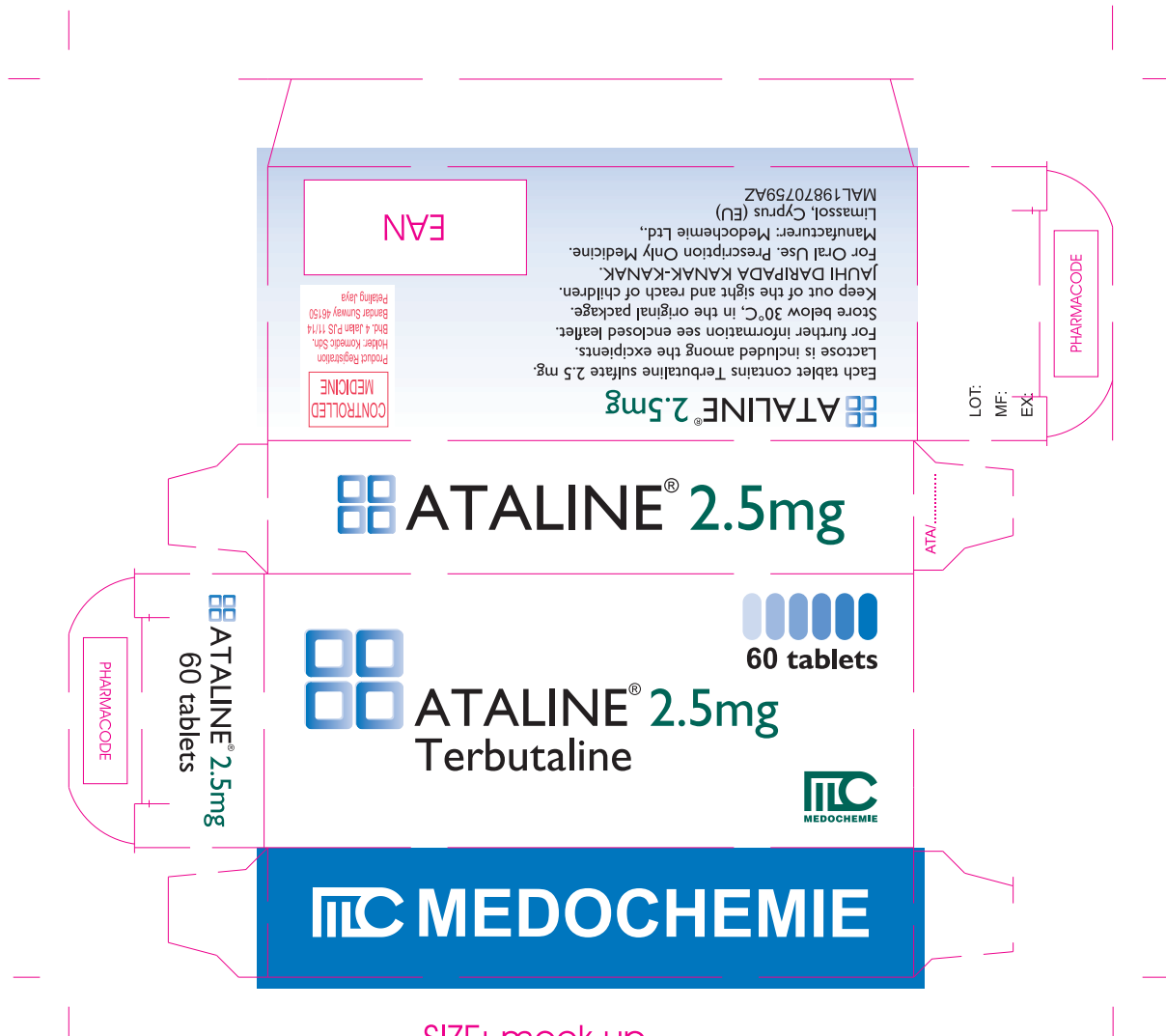


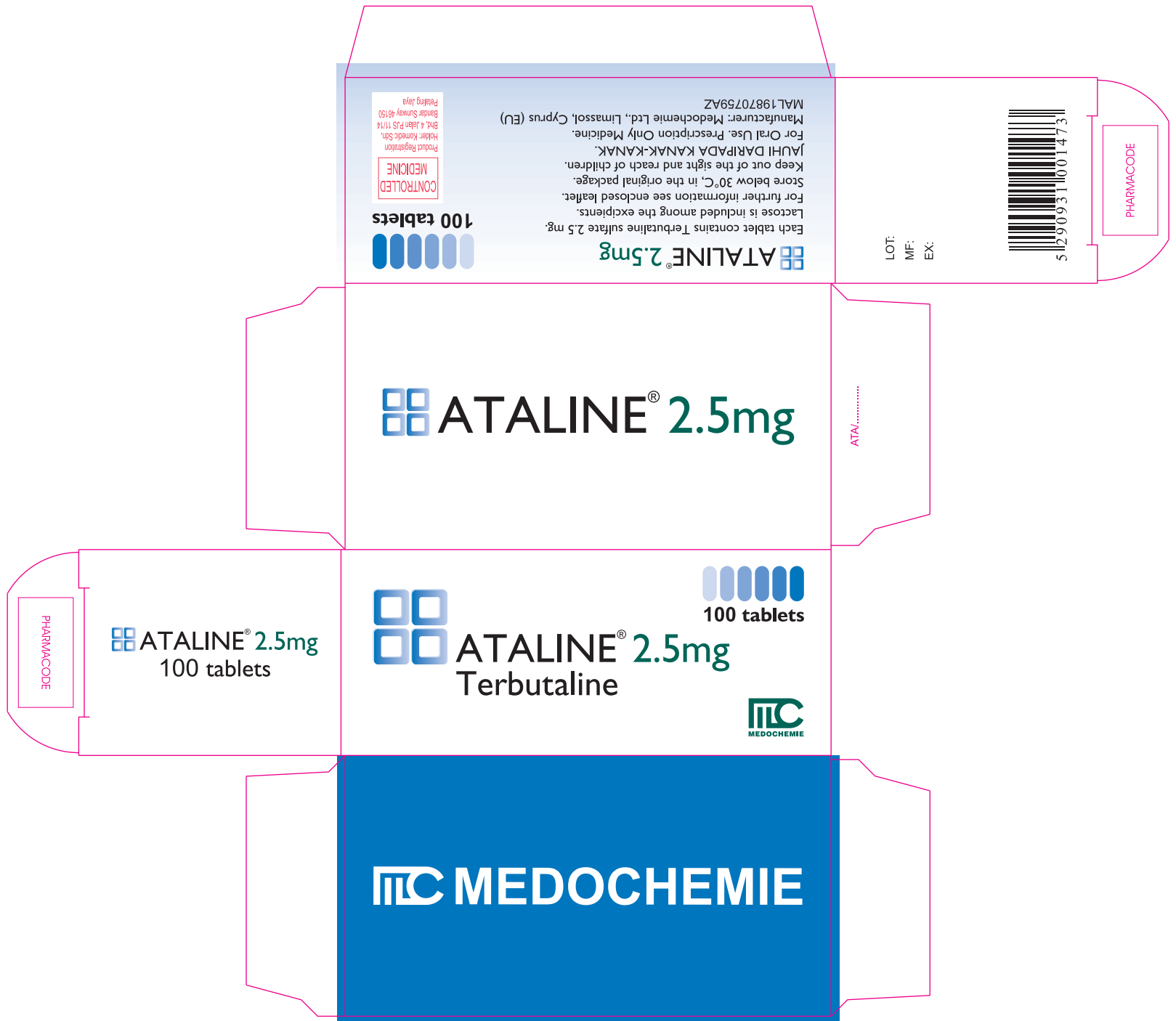
SIZE: 38 x 19 x 90mm

- PANTONE RED 032 C
- PANTONE 285 C
- PANTONE 336 C
- BLACK C



SIZE: mock-up

- PANTONE RED 032 C
- PANTONE 285 C
- PANTONE 336 C
- BLACK C



SIZE: 37.5 x 48.5 x 88.5mm

- PANTONE RED 032 C
- PANTONE 285 C
- PANTONE 336 C
- BLACK C

SIZE: 95 x 47 mm

MEDOCHEMIE

ATALINE[®] 2.5mg
Terbutaline

500 tablets

**CONTROLLED
MEDICINE**

Each tablet contains Terbutaline sulfate 2.5 mg.
Lactose is included among the excipients.
For further information see enclosed leaflet.
Store below 30°C, in the original package.
Keep out of the sight and reach of children.
JAUHI DARIPADA KANAK-KANAK.
For Oral Use. Prescription Only Medicine.

Manufacturer:
Medochemie Ltd.,
Limassol, Cyprus (EU)
MAL 19870759AZ



Product Registration
Holder: Komedic Sdn.
Bhd., 4, Jalan PJS 11/14
Bandar Sunway 46150
Petaling Jaya

LOT:
MF:
EX:

ATA/.....

15 mm

10 mm

25 mm

 PANTONE RED 032 C

 PANTONE 285 C

 PANTONE 336 C

 BLACK C

SIZE: 95 x 47 mm

MEDOCHEMIE

ATLINE[®] 2.5mg
Terbutaline

1000 tablets

**CONTROLLED
MEDICINE**

Each tablet contains Terbutaline sulfate 2.5 mg.
Lactose is included among the excipients.
For further information see enclosed leaflet.
Store below 30°C, in the original package.
Keep out of the sight and reach of children.
JAUHI DARIPADA KANAK-KANAK.
For Oral Use. Prescription Only Medicine.
Manufacturer:
Medochemie Ltd.,
Limassol, Cyprus (EU)
MAL 19870759AZ

Product Registration
Holder: Komedic Sdn.
Bhd., 4, Jalan PJS 11/14
Bandar Sunway 46150
Petaling Jaya

LOT:
MF:
EX:

EAN

ATA/.....

15 mm

10 mm

25 mm

 PANTONE RED 032 C

 PANTONE 285 C

 PANTONE 336 C

 BLACK C