

Carton:
 Size: 44x71x102mm
 Construction: K11
 Material: Fully coated folding boxboard
 Thickness: 500 micr.

Braille: X

Codes:
 Pharmacode 1065

Colors:
 Black
 Pantone 659
 Pantone 2935

Number of colors: 3
 Varnish: partial

Special requirements:

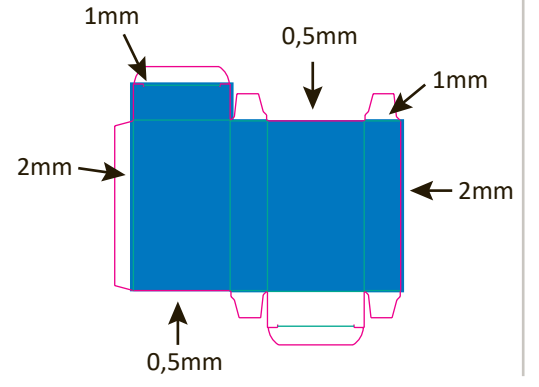
SAP number:
 159743-1

Fonts and size :
 MyriadPro / 7 pt.
 Braille 1cm Dutch 28,35pt
 Pharmacode-O 36pt

Non print colors:
 Die cut:
 cut
 crease
 No color or varnish
 Braille

Approved for printing by/date:

Bleed for carton:



69,5

16

