



Pharmacode Reads This Way
 ↑
 First Bar
 Last Bar

Pharmacode Reads This Way
 ↓
 First Bar
 Last Bar

Ink & varnish free area

NS21

CUSTOMER INFO:
 Minimum Point Size = 4.20pt

RB Artwork and Print Specification

Trident Reference No: RB394572
 ZEN Ref: **TR1698875**
 Action: **C**
 Brand: Nurofen
 Category: Adult
 Segment Group: Cold & Flu
 Segment: Ibuprofen & Paracetamol
 Pack Size: 684mg
 Market/Country: Malaysia / Singapore
 Date: 16/10/19

RBH Contact: MunYee Looi

Artwork Type: IDM Commercial

Component Code (2D if applicable): **3108844**
 Parent Technical Packaging
 Specification: D0067170
 Finished Goods Code: **3035119**
 Supply Point: RB Nottingham
 3rd Party Code: N/A
 Pharmacode No/NE: 1110110100(1971)
 Edgemark Position: 9, 12

CAD Cam Ref: N-Crt-FB-NS21-D0067170-61x19x116mm
 Printer: Medica Packaging Limited (Crewe, UK)
 Substrate: Carton Board - Silver

Technical & Non Printing Items
 ■ Cutter ■ Cutter 2 (if applicable)
 ■ Guides ■ Guides 2 (if applicable)

Colours (Carton)

Printed White	Process Yellow	Process Black	PANTONE 185 C
1 LTH	2 LTH	3 LTH	4 LTH
PANTONE 354 C	5 LTH	6 LTH	

BARCODE INFO

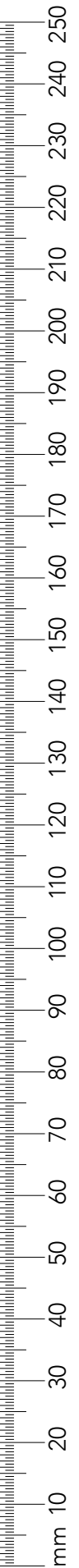
Barcode Type: EAN 13
 Barcode Number: 9556111990606
 Magnification: 90%
 Truncated By: 9.2 mm
 Full Height: 14.3 mm
 Bar Height (Smallest Bar): 11.4 mm
 BWR: 0 microns
 Encoded Data: N/A



Please note that any low resolution paper Canon colour copies associated with this job should be referred to for content, layout and colour separation only.

UNDER NO CIRCUMSTANCES SHOULD THIS ARTWORK BE ALTERED WITHOUT PRIOR PERMISSION FROM TRIDENT.

STUDIO USE ONLY Lindsay Foster v2.0
 Sm•Art check results: G=2; O=1; R=0; - LF - 16/10/19 10:50:01





RB Artwork and Print Specification

Trident Reference No: RB394572
 ZEN Ref: **TR1698875**
 Action: **C**
 Brand: Nurofen
 Category: Adult
 Segment Group: Cold & Flu
 Segment: Ibuprofen & Paracetamol
 Pack Size: 684mg
 Market/Country: Malaysia / Singapore
 Date: 16/10/19

RBH Contact: MunYee Looi

Artwork Type:

Component Code (2D if applicable): **3108844**
 Parent Technical Packaging
 Specification: D0067170
 Finished Goods Code: **3035119**
 Supply Point: RB Nottingham
 3rd Party Code: N/A
 Pharmacode No/NE: 1110110100(1971)
 Edgemark Position: 9, 12

CAD Cam Ref: N-Crt-FB-NS21-D0067170-61x19x116mm
 Printer: Medica Packaging Limited (Crewe, UK)
 Substrate: Carton Board - Silver

Technical & Non Printing Items
 Cutter Cutter 2 (if applicable)
 Guides Guides 2 (if applicable)

Colours (Carton)

Printed White	Process Yellow	Process Black	PANTONE 185 C
1 LTH	2 LTH	3 LTH	4 LTH
PANTONE 354 C	PANTONE 354 C (Vermil, Satin Water Based Ink)		
5 LTH	6 LTH		

BARCODE INFO

Barcode Type: EAN 13
 Barcode Number: 9556111990606
 Magnification: 90%
 Truncated By: 9.2 mm
 Full Height: 14.3 mm
 Bar Height (Smallest Bar): 11.4 mm
 BWR: 0 microns
 Encoded Data: N/A

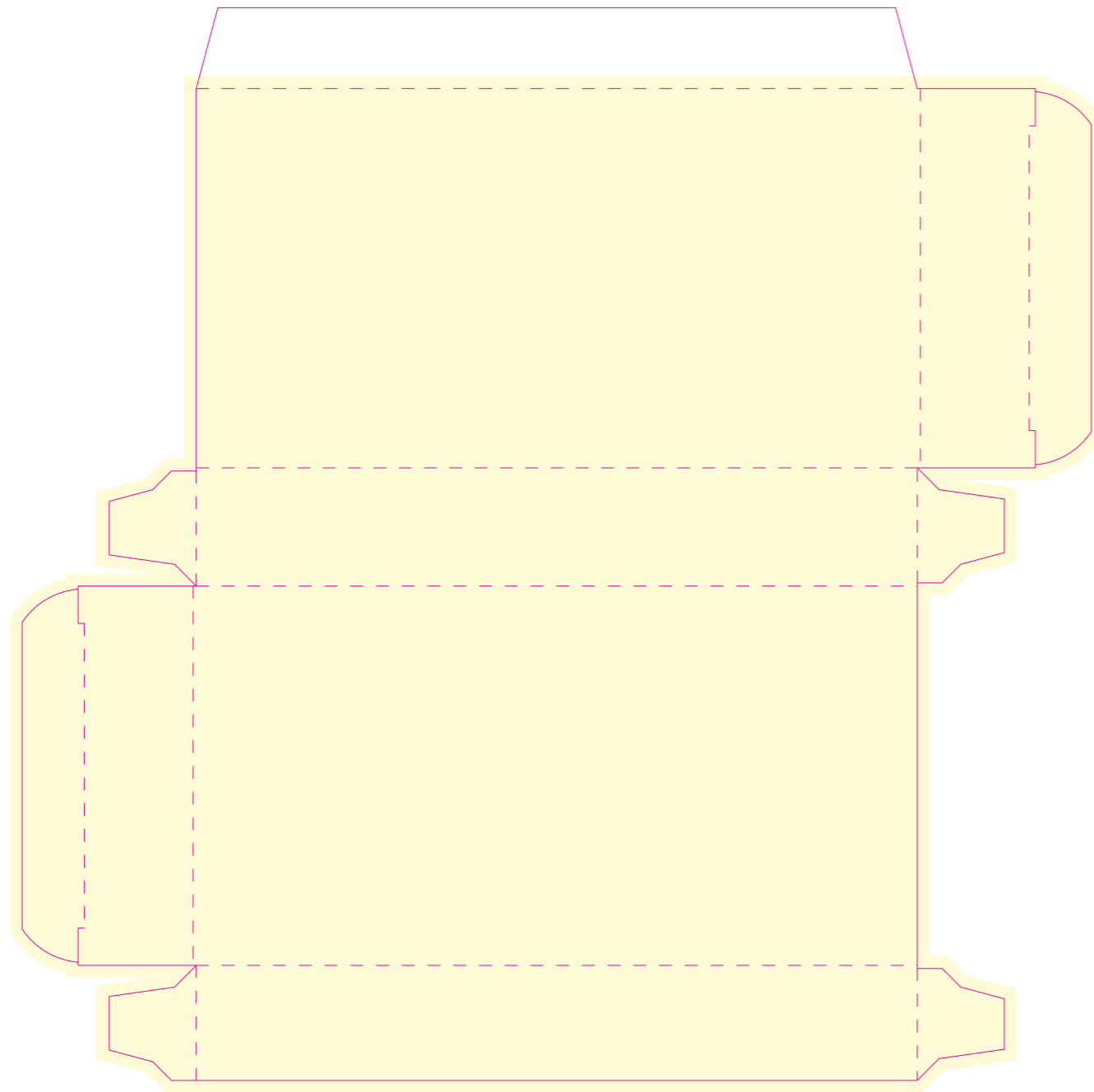


Please note that any low resolution paper Canon colour copies associated with this job should be referred to for content, layout and colour separation only.

UNDER NO CIRCUMSTANCES SHOULD THIS ARTWORK BE ALTERED WITHOUT PRIOR PERMISSION FROM TRIDENT.

STUDIO USE ONLY Lindsay Foster **v2.0**
 Sm•Art check results: G=2; O=1; R=0; - LF - 16/10/19 10:50:01





NS21

RB Artwork and Print Specification

Trident Reference No: RB394572
 ZEN Ref: **TR1698875**
 Action: **C**
 Brand: Nurofen
 Category: Adult
 Segment Group: Cold & Flu
 Segment: Ibuprofen & Paracetamol
 Pack Size: 684mg
 Market/Country: Malaysia / Singapore
 Date: 16/10/19

RBH Contact: MunYee Looi

Artwork Type: IDM Commercial

Component Code (2D if applicable): **3108844**
 Parent Technical Packaging
 Specification: D0067170
 Finished Goods Code: **3035119**
 Supply Point: RB Nottingham
 3rd Party Code: N/A
 Pharmacode No/NE: 1110110100(1971)
 Edgemark Position: 9, 12

CAD Cam Ref: N-Crt-FB-NS21-D0067170-61x19x116mm
 Printer: Medica Packaging Limited (Crewe, UK)
 Substrate: Carton Board - Silver

Technical & Non Printing Items
 ■ Cutter ■ Cutter 2 (if applicable)
 ■ Guides ■ Guides 2 (if applicable)

Colours (Carton)

Printed White	Process Yellow	Process Black	PANTONE 185 C
1 LTH	2 LTH	3 LTH	4 LTH
PANTONE 354 C	6 LTH		
5 LTH			

BARCODE INFO

Barcode Type: EAN 13
 Barcode Number: 9556111990606
 Magnification: 90%
 Truncated By: 9.2 mm
 Full Height: 14.3 mm
 Bar Height (Smallest Bar): 11.4 mm
 BWR: 0 microns
 Encoded Data: N/A



HEALTH ▸ HYGIENE ▸ HOME



Connaught House, Connaught Road,
 Kingswood Business Park, Hull, HU7 3AP, England.
 T: +44 (0) 1482 828100

Please note that any low resolution paper Canon colour copies associated with this job should be referred to for content, layout and colour separation only.

UNDER NO CIRCUMSTANCES SHOULD THIS ARTWORK BE ALTERED WITHOUT PRIOR PERMISSION FROM TRIDENT.

STUDIO USE ONLY Lindsay Foster **v2.0**
 Sm•Art check results: G=2; O=1; R=0; - LF - 16/10/19 10:50:01

CUSTOMER INFO:
 Minimum Point Size = 4.20pt



Production line		
Manufacturing site		
Pack Tech approver	1st 2nd	
Date		
Check Criteria	Details Et Comments	Checks
Approvals		1st 2nd
Market Approval		
Regulatory Approval		
3rd Party Approval		
Technical Drawing/Cutter ref no.		
PPI component code correct on artwork?		
Correct drawing for the production line?		
Profile shape Et dimensions		
Graphics layout/orientation		
Unwind diagram (PPTD1022/1-20)		
Printable areas/bleed		
Varnish free areas		
Variable coding position Et dimensions		
Varnish and print requirements		
Pre-printed headers (alignment and suitability)		
Embossing, Braille Et Foil Blocking		
Separations on artwork		
Alignment within cutter		
Braille structure		
Verification Code Type; Pharma Code / 2D / OCV		
Bar sequence and/or number correct Position		
Size (height, width, spacing, font)		
Direction of read		
Light margins and print free areas		
Colour		
Repeat distance (reeled material)		
Cross check related docs ie BOM		
Bar code Type; EAN, ITF, Code39, etc		
Magnification / width and height		
Colour (e.g. black print on white background)		
Light margins Et indicators		
Bearer bars Et H gauges (if required)		
Symbol grade (Pass = A,B,C; Action = D,F)		
Bar code number (human readable)		
Bar code number (encoded Et hidden data)		
Confirm bar code number from source		
Cross check related docs (JDE/PID)		
Photo-electric cell mark / edge marks		
Present Et per Tech drawing?		
Correct pitch?		
Additional markings		
e-mark, recycle logo etc		
Legend box (RB specification)		
Correct component code		
Correct D spec / has cutter changed?		
Correct printer / has printer changed?		
Correct Substrate		
A/W is set up appropriately for this substrate		
Edge mark details		
Pharmacode details		
Colours Et print process		
Varnish		
Barcode information		
General details are correct		
Pass / Fail comments and Signature		
By approving the artwork referenced within this form I authorise it for release to the print supplier		
Additional Comments		

RB Artwork and Print Specification

Trident Reference No: RB394572
 ZEN Ref: **TR1698875**
 Action: **C**
 Brand: Nurofen
 Category: Adult
 Segment Group: Cold & Flu
 Segment: Ibuprofen & Paracetamol
 Pack Size: 684mg
 Market/Country: Malaysia / Singapore
 Date: 16/10/19

RBH Contact: MunYee Looi

Artwork Type: **IDM Commercial**

Component Code (2D if applicable): **3108844**
 Parent Technical Packaging
 Specification: D0067170
 Finished Goods Code: **3035119**
 Supply Point: RB Nottingham
 3rd Party Code: N/A
 Pharmacode No/NE: 1110110100(1971)
 Edgemark Position: 9, 12

CAD Cam Ref: N-Crt-FB-N521-D0067170-61x19x116mm
 Printer: Medica Packaging Limited (Crewe, UK)
 Substrate: Carton Board - Silver

Technical & Non Printing Items
 Cutter Cutter 2 (if applicable)
 Guides Guides 2 (if applicable)

Colours (Carton)

Printed White	Process Yellow	Process Black	PANTONE 185 C
1 LTH	2 LTH	3 LTH	4 LTH
PANTONE 354 C	6 LTH		
5 LTH			

BARCODE INFO

Barcode Type: EAN 13
 Barcode Number: 9556111990606
 Magnification: 90%
 Truncated By: 9.2 mm
 Full Height: 14.3 mm
 Bar Height (Smallest Bar): 11.4 mm
 BWR: 0 microns
 Encoded Data: N/A



Please note that any low resolution paper Canon colour copies associated with this job should be referred to for content, layout and colour separation only.

UNDER NO CIRCUMSTANCES SHOULD THIS ARTWORK BE ALTERED WITHOUT PRIOR PERMISSION FROM TRIDENT.

STUDIO USE ONLY Lindsay Foster v2.0
 Sm•Art check results: G=2; O=1; R=0; - LF - 16/10/19 10:50:01

